



# CALL FOR ARTISTS



## Groundwork Hudson Valley

And

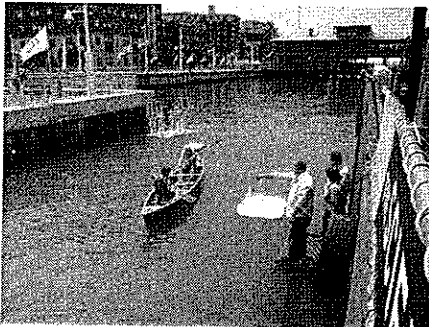
## The Science Barge

Present

# Second Annual Floating Sculpture Exhibition

June 12<sup>th</sup> - 13<sup>th</sup>, 2010

Drawing upon our 2009 success, we are repeating our floating water sculpture exhibition. Groundwork Hudson Valley is seeking artists to create floatable art to be installed in a semi-sheltered section of the river adjacent our Science Barge. The Science Barge is a 135' floating greenhouse powered by solar panels, wind turbines, and biofuels. This museum is open to the public and school groups. Visitors learn about sustainable living and urban agriculture.

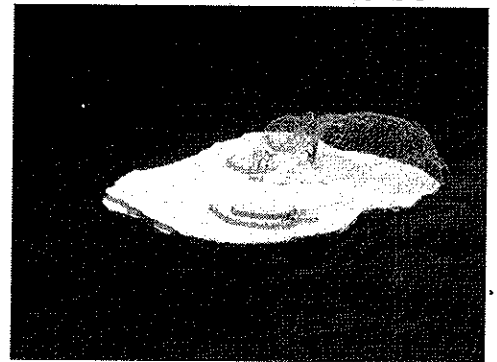


The Installation Begins

The Science Barge's owner, Groundwork Hudson Valley, is an independent non-profit that works to restore urban habitats by engaging civic, business, and area residents in on-the-ground environmental projects. Our water sculpture celebration is a two day event building upon our work in this community. The event begins on Saturday morning with the installation. The event continues later that day with a

reception for the artists and music, and an opportunity for the judges to review the art. There are also boxes for the guests to vote on their favorite art as well. All Saturday and Sunday the sculptures will be available for viewing by the general public.

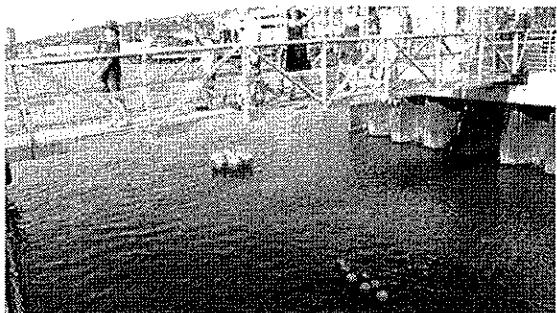
The site of the installation is the Hudson River in an area between the Science Barge and the shore. The Science Barge is moored 35' off shore. There is a beautiful little park onshore along side a brick path with benches. The park sits at the confluence of the Saw Mill River and the Hudson



Last Year's Winner



River. Combined with the majestic Palisades in the distance framed by the George Washington and Tappan Zee Bridges, make this an especially beautiful site. The Science Barge, its gangway, and the shore side park makes it possible for the sculptures to be viewed easily from all sides. The sculptures will be judged for artistic merit and creativity by a panel of judges and by a "people's choice" ballot and recognition awards will be given. Please see the following rules for further information.

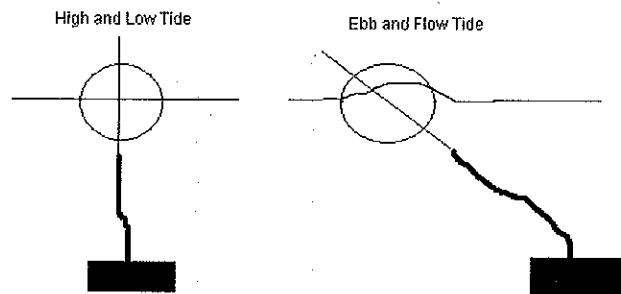


We hope you'll join in the celebration of the river by providing your artistic talent. By bringing people down to the Hudson River you help raise awareness as to the plight of this majestic and important body of water. Please see the following rules for complete information:

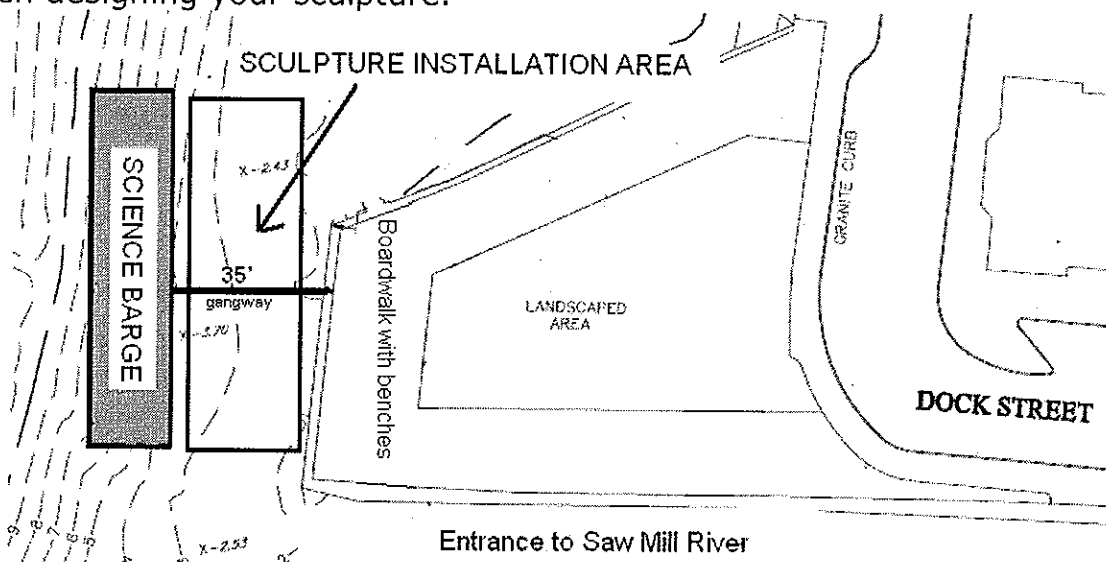
### **Exhibition Rules**

1. As space is limited, you must pre-register if you want your art to be included in the exhibition. Please complete the enclosed form and mail, email, or fax it back to us by May 28<sup>th</sup>. Our exhibition space is limited (the area is roughly 135' x 35', since room must be allowed for movement). We cannot anticipate the room required as some sculptures will be larger than others. We reserve the right to limit the number of water sculptures.
2. The sculptures must be ready and installed in the Hudson River by early Saturday morning. Some may be installed in the river on Friday depending upon weather conditions. However, you must call to schedule an appointment for the installation (914-375-2151). You are not permitted to place the art yourself.
3. The sculptures should be constructed of sturdy and durable materials that float. There are several different and affordable (under \$40) types of material to choose from. These include (but are certainly not limited to) Styrofoam blocks, vinyl buoys, inflatable swimming pool toys, pool "noodles," empty recycled bottles and jugs (which can be rafted together), inner tubes, lightweight wood rafts, crab pot markers, boat fenders, foam life rings, foam swimming pool floats, kickboards, old surf boards, dock floats, empty mini beer kegs, or any other item that floats.
4. The art pieces must have a secure place to attach an anchor line. If you already possess an anchor, please supply one. However, if you do not have an anchor one will be supplied for you if you let us know in advance. Note that the Hudson River has a diurnal (twice daily) tide. Even though there is some shelter from the main river, the current can reach up to 2 miles an hour. Combined with wind and occasional wake from passing boats, the art piece will experience significant movement, rocking, and pull. As with designing any outdoor sculpture, please consider the elements in your design. Art pieces deemed too fragile for anchoring will not be allowed in the water. The art pieces will be anchored in water that fluctuates between 3' to 7' of depth. We will space the art to give it enough room to move with the ebb and flow of the river. We will vary the anchor line depending on the placement of your piece. The art pieces will be placed in the water by our crew with input from you and our river advisors. In no way should you enter the water. All art will be pre-inspected by our crew to insure its durability for installation in the Hudson River.

5. We respect the river and have done much work to help preserve it. Do not use any material that will degrade, disintegrate, melt, or leach any foreign substance into the water. Do not use any fragile material that might potentially break off and pollute the river. Use only non-toxic paints and materials. Sculptures that may present a water hazard are not allowed.
6. Please take into consideration that the rain may affect your sculpture's ability to remain buoyant.
7. Please consider the effect of drag on your art. The current flows twice a day: Depending on the design, this may cause the art to tilt slightly. To compensate, sculptures should ride as high as possible on the water or have rounded bottoms, be streamlined, or be interesting at whatever angle they may appear. How your art is harnessed to the anchor can effect how it rides on the water as well. For most of the day the flow of the river is negligible, and as we are not mid-stream, the drag will be reduced some.



8. The exhibition site is between the bulkhead (shore) and the Science Barge. As the bulkhead is at a fixed height, sometimes the waterline will be three feet below and sometimes six feet below. As the barge floats, from the barge the waterline will always be four feet below. Thus, regardless from where you view them, the sculptures will be seen from slightly above. Please take this into consideration when designing your sculpture.



9. The site is somewhat protected, however, there will be wind, chop, wake, and the occasional waterfowl who might find your art a suitable resting place. These elemental influences should be considered.

10. The clarity of the Hudson River varies widely depending on rainfall, wind, and currents. Sometimes the water is clear to a couple of feet, and sometimes it's muddy and opaque. Please consider this in your design.
11. The pieces will be judged on their artistic merit and creativity. A panel of judges will review the art and will award a first, second, and third place award, followed by an honorable mention. In addition, a ballot box will be positioned aboard the Science Barge to allow the general public to rate the sculptures as well. The three sculptures receiving the most points will be awarded the "People's Choice" awards. The winning pieces of art will be announced at 5:00 p.m. on Saturday. It is possible that a piece of art will win both a judge's award and a peoples' choice award.
12. All contestants will be invited to the reception held aboard the Science Barge on Saturday at 2:00 p.m. and will be honored at the event. This is an optional event. You do not need to be present to have your sculpture in the exhibition, and your art will still be judged.
13. We will send out press releases for the free event, and the Science Barge will be open to the public for viewing the art (which is also visible from the shore). A brochure will be created detailing the art and the artists, including a description of the art supplied by you and any information you want to include about your artistic career or endeavors. You may also include contact information.
14. All art will be removed from the water at 6:00 p.m. on Sunday (or sooner if inclement weather moves up the deadline). Some art can be stored aboard the Science Barge for retrieval, however, we request that all artist be ready to take their art home at the end of the exhibition. Art that is not reclaimed by Monday 6:00 p.m. may be destroyed if no additional arrangements are made for pickup.
15. The Science Barge, and its owner, Groundwork Hudson Valley, assume no liability for the art or for any damage that may occur to it as a result of being in the exhibition. The Hudson River is a flowing dynamic river and occasionally debris moves with the current. While we will make an attempt to protect the art, we are not responsible for damage that occurs. In addition, while access to the river is certainly limited and the art will be placed far enough off shore to be out of reach. We will arrange for extra security patrols during the event, and the barge is manned until late in the evening. However, we cannot be held responsible for willful acts of vandalism, theft, or destruction.
16. Please complete the following reservation form and return as soon as possible. If you have additional questions or technical considerations, please contact Curt Collier at Groundwork Hudson Valley. He can be reached at (914)375-2151 between the hours of 10:00 a.m. and 6:00 p.m. on weekdays, or you can email him at [curt@groundworkhv.org](mailto:curt@groundworkhv.org). Curt can provide information on where to purchase floatable materials.
17. Groundwork Hudson Valley is holding a celebration along the Saw Mill River later that summer in honor of the tremendous clean-up effort that will have occurred. Those who would like to have their art also displayed as part of that event will be encouraged to enter.

The Science Barge wishes to thank its sponsors:



# First Annual Floating Sculpture Exhibition

June 12<sup>th</sup> - 13<sup>th</sup>, 2010

## Entrance Form

Name: \_\_\_\_\_

Address: \_\_\_\_\_

\_\_\_\_\_

Phone: \_\_\_\_\_ Email: \_\_\_\_\_

Name of your piece: \_\_\_\_\_

Brief description and artist notes for program:

Brief bio of artist:

Rough Dimensions:

Height \_\_\_\_\_ Length \_\_\_\_\_ Width \_\_\_\_\_

**Material environmental safety checklist** – "I understand that we all need to protect the Hudson River. My sculpture will not be constructed using any materials that will impact the quality of the water nor will it contain fragile parts that may break loose and enter the ecosystem. I will create the art with an anchoring attachment that can withstand the pressure of water pushing against it."

Please Initial: \_\_\_\_\_

**Liability release** – "I further understand that the Hudson River is a dynamic moving ecosystem. I agree that neither the Science Barge, nor its owner – Groundwork Hudson Valley – can be held responsible for any damage that may occur to my art during installation, as a result of being in the river, or during removal.

Please Initial: \_\_\_\_\_

Signature: \_\_\_\_\_